



LUXE ATELIER

MILANO

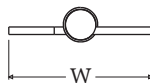
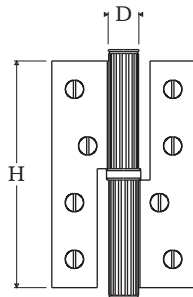
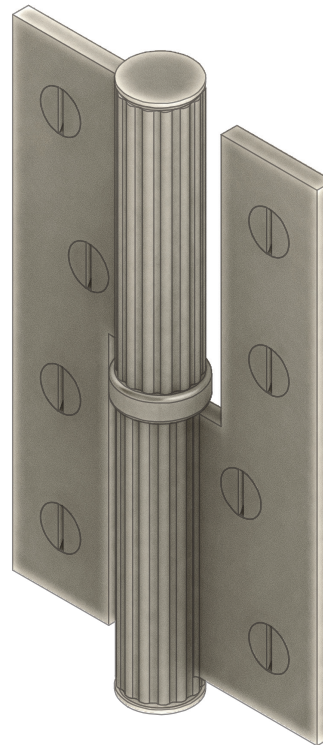


Cerniera a Libro Serie Roma 01 (RH/LH)
Roma Series 01 Paumelle Hinge (RH/LH)

Dimensioni
Dimensions

	H	W	D
S	100	75	16
M	120	75	16
L	140	75	16

Dimensioni in millimetri
Dimensions given in millimeters



Ghiera con cuscinetti a sfera, perno in acciaio e viti legno in finitura coordinata.

Disponibile in tutte le finiture standard.

Dimensioni e finiture su misura disponibili su richiesta.

Stainless steel pin, ball bearings and wood screws in matching finish.

Additional sizes available by special order. Available in standard and custom finishes.